



INGHAM COUNTY: COVID-19 UPDATE, SEPTEMBER 22, 2020

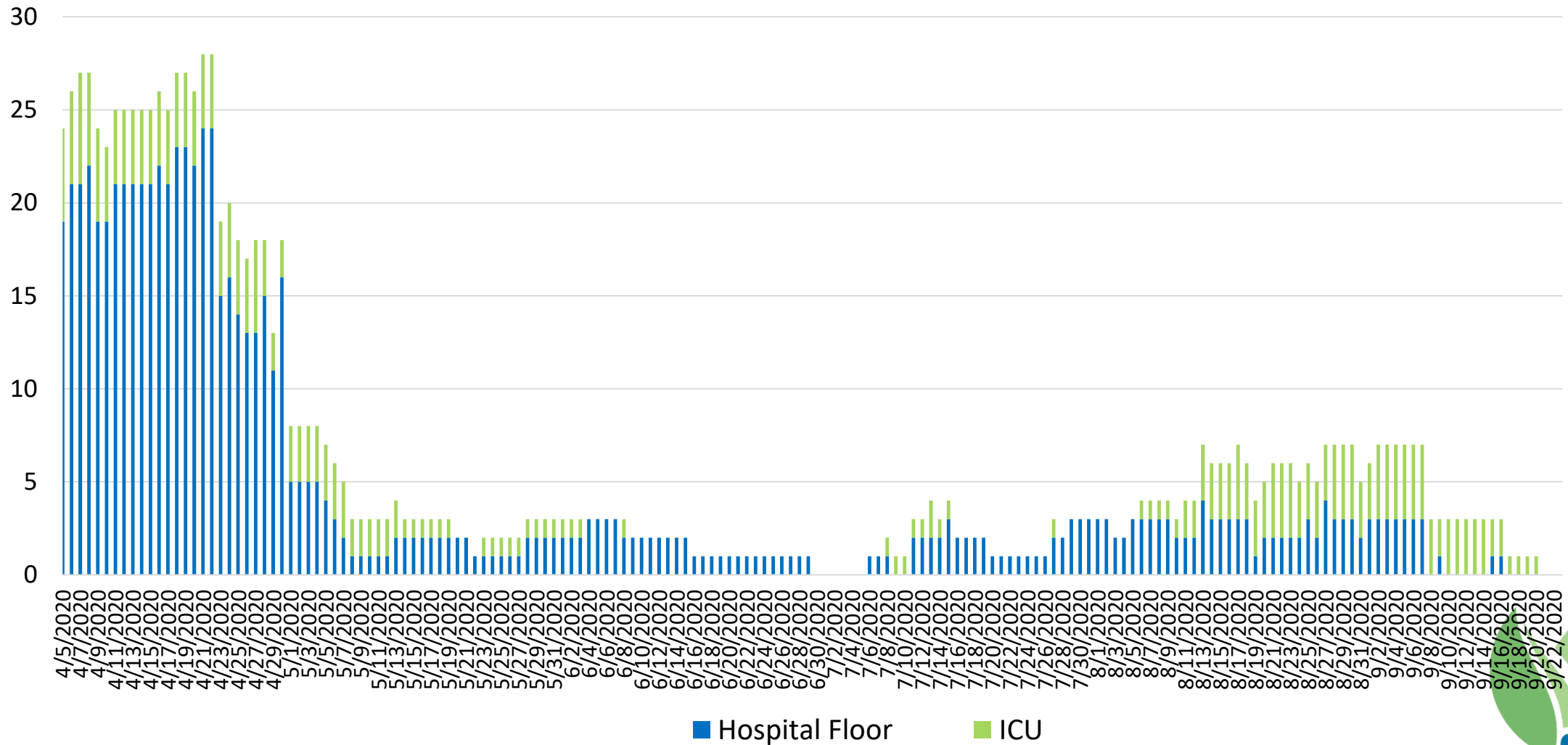
Ingham County: COVID-19 Data Summary

- **Confirmed cases = 3,230**
 - **Reported deaths= 45**
 - **Hospitalized(inpatients)= None (0 in ICU)**
 - **Home(outpatient)= 1,554**
 - **Recovered = 1,631**
- **Case Fatality Rate CFR = 1.4%**
- **Monitoring:**
 - **Ingham:**
 - **Active= 207**
 - **Complete= 1,404**
 - **Traceforce:**
 - **Active= 1,549**
 - **Complete= 581**

Data are current as of 11 AM, 09/22/2020.



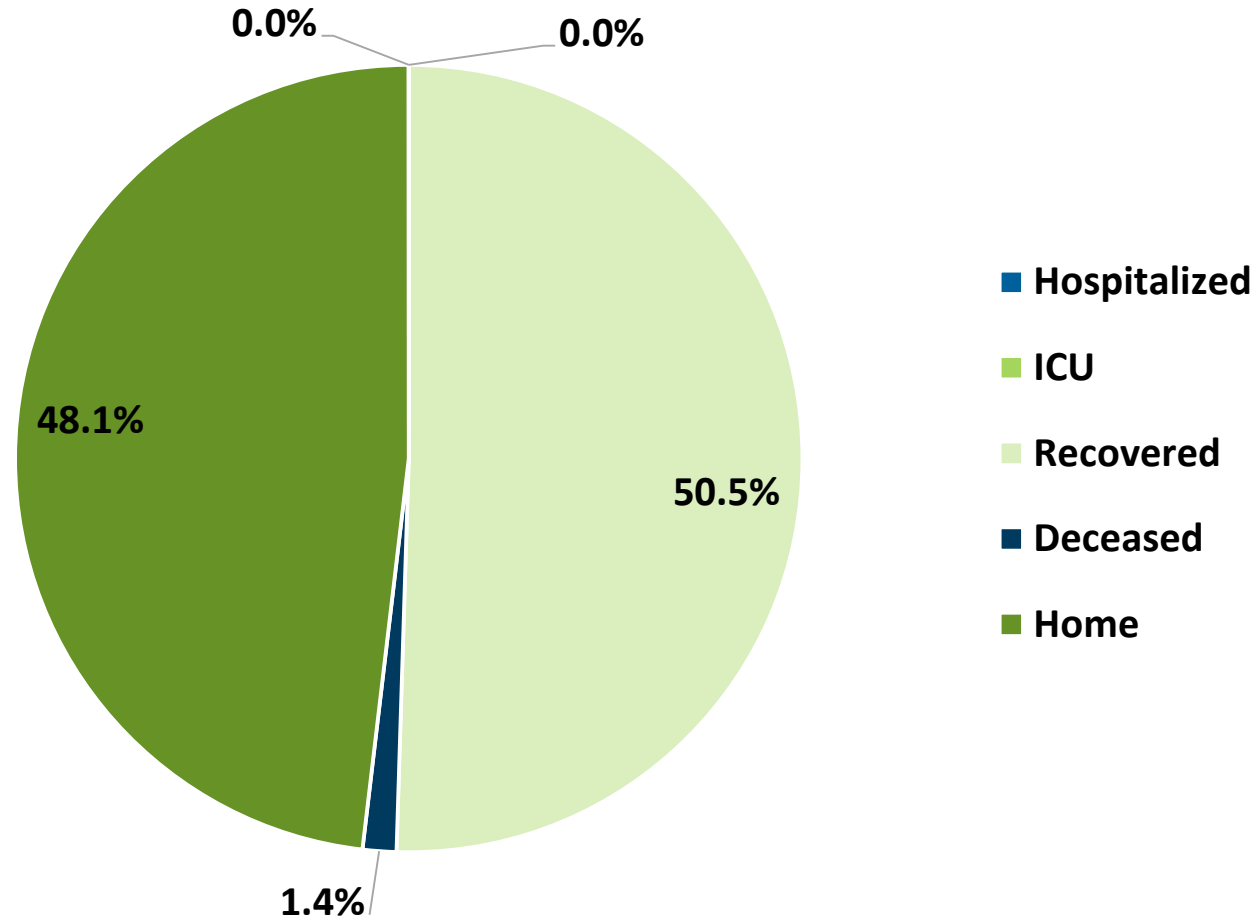
Ingham County: Hospitalization of Residents (Hospitalized vs. ICU)



Data are current as of 11 AM, 09/22/2020. There are no hospitalizations for 6/30 to 7/5.



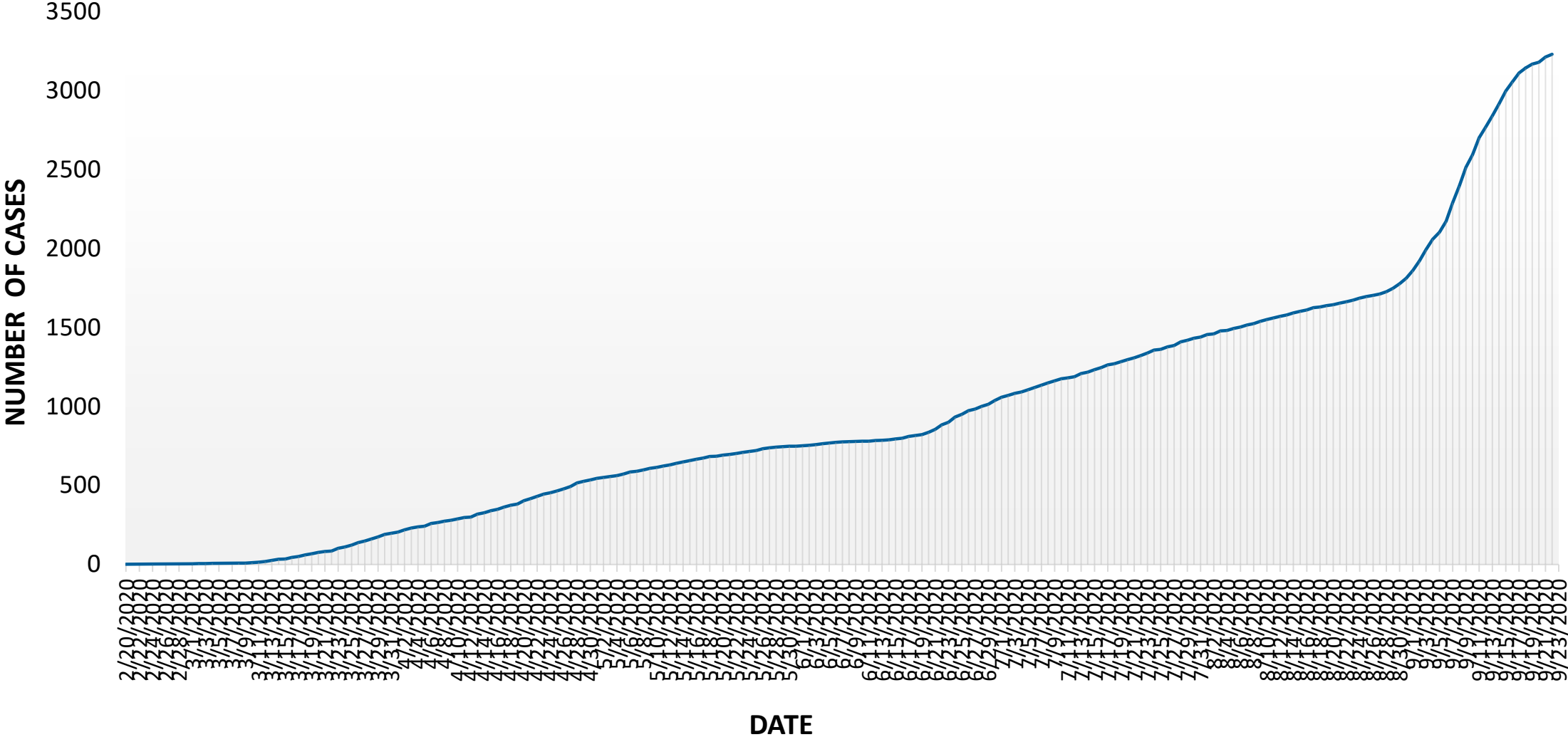
Ingham County: Status of COVID-19 Patients



Data are current as of 11 AM, 09/22/2020.

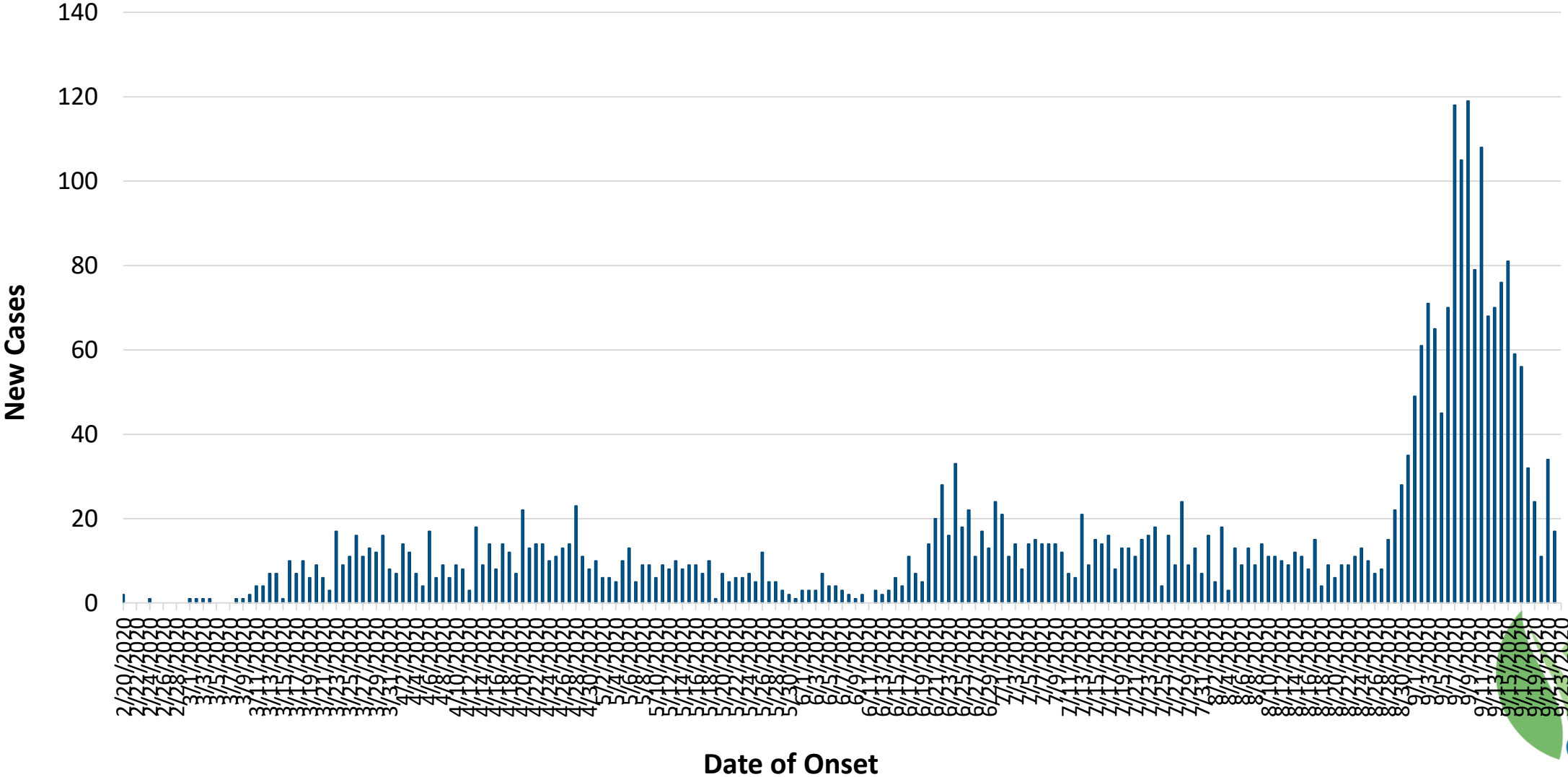


Ingham County: Cumulative Confirmed COVID-19 Cases by Date of Onset



Data are current as of 11 AM, 09/22/2020.

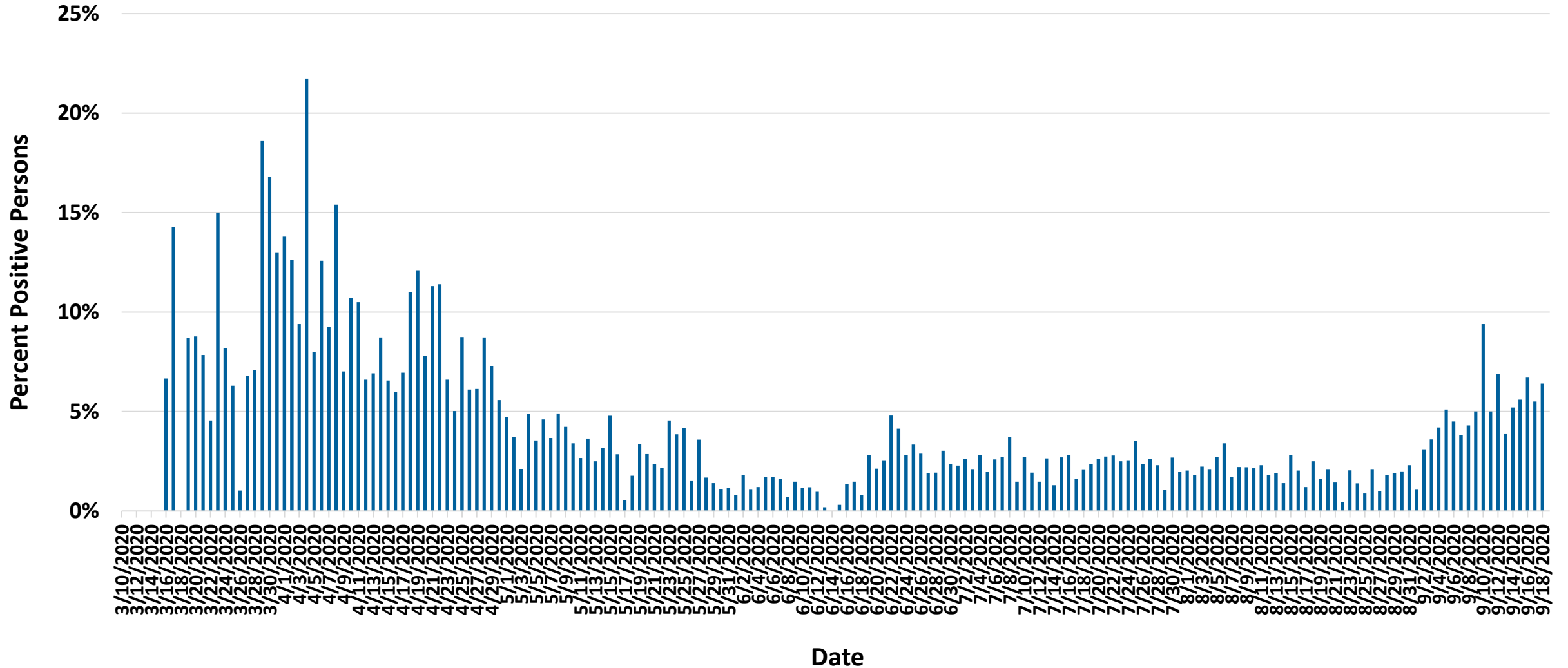
Ingham County: Incidence Curve



Data are current as of 11 AM, 09/22/2020.

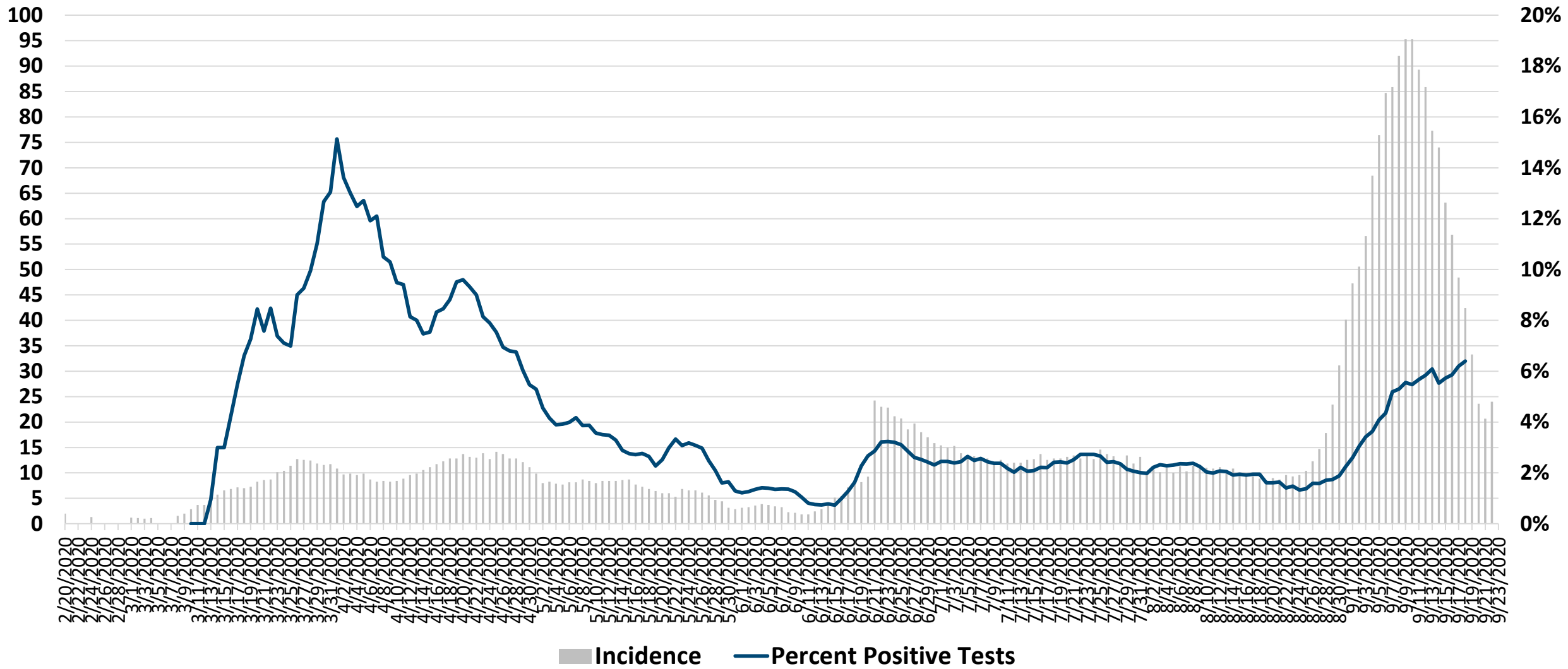


Ingham County: Percent Positive COVID19 Tests by Day



Note: 100% of Tests were positive on 3/12/20. This observation being an outlier has been removed from the graph to improve the y-axis scale visualization. Data source: MIHAN. Data are available up to 09/18/2020 and are current as of 1 PM, 09/22/2020.

Ingham County: 7 Day Rolling Averages - Incidence and Percent Positive Tests



Data are current as of 11 AM, 09/22/2020.

Ingham County: Number of COVID-19 Cases by Zip Code

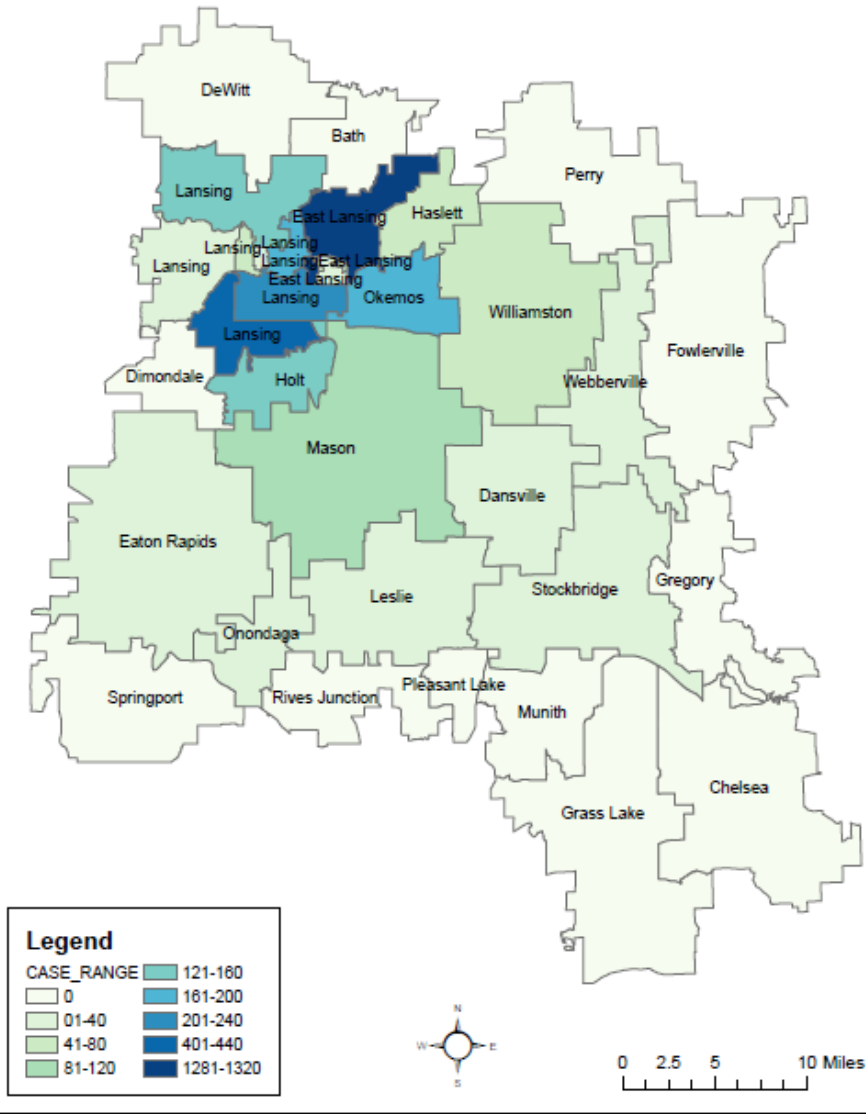
Case Range	Zip Codes
1-10	48821, 48827, 48837, 48872, 48909
11-20	48824, 48819, 48933, 49264, 49285
21-30	48892, 48917, 49251
41-50	
61-70	48825, 48840, 48895
71-80	48915
101-110	
111-120	48854
121-130	48842, 48906
171-180	48864
191-200	48912
221-230	48910
431-440	48911
1261-1270	48823

Data are current as of 11 AM, 09/22/2020.



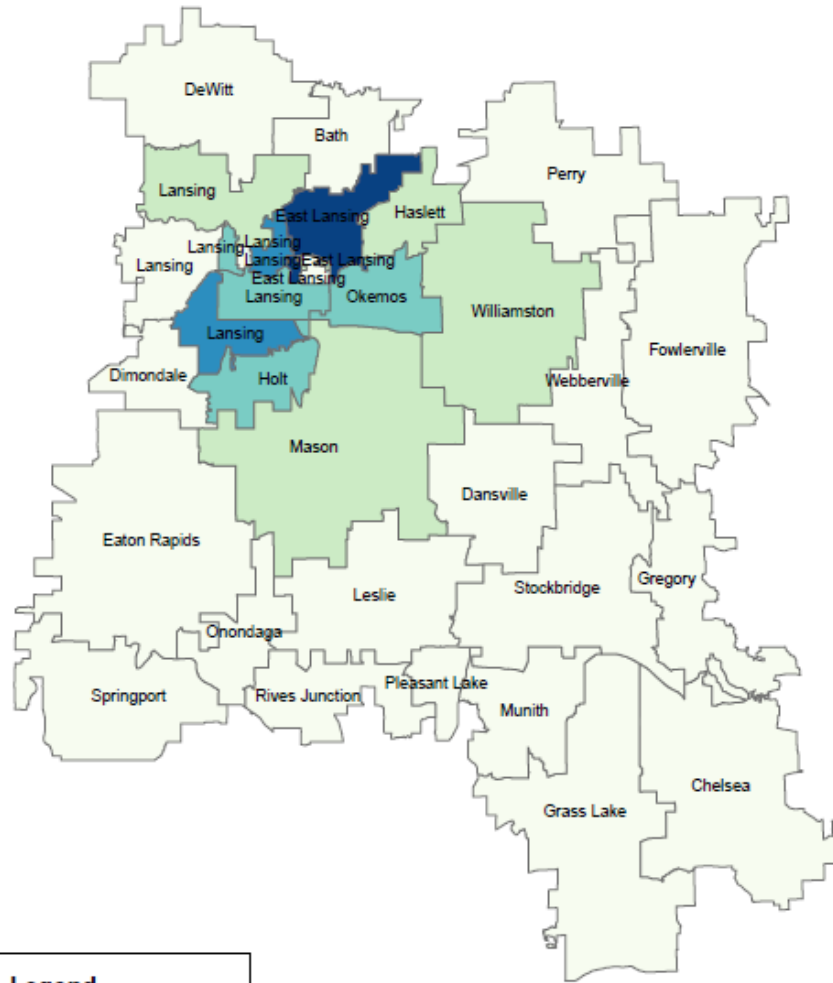
Ingham County: COVID-19 Cases by Zip Code

Data current as of 11 AM, 9/22/2020



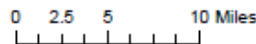
Ingham County: COVID-19 Rate Per 100,000 Population

Data current as of 11 AM, 9/22/2020



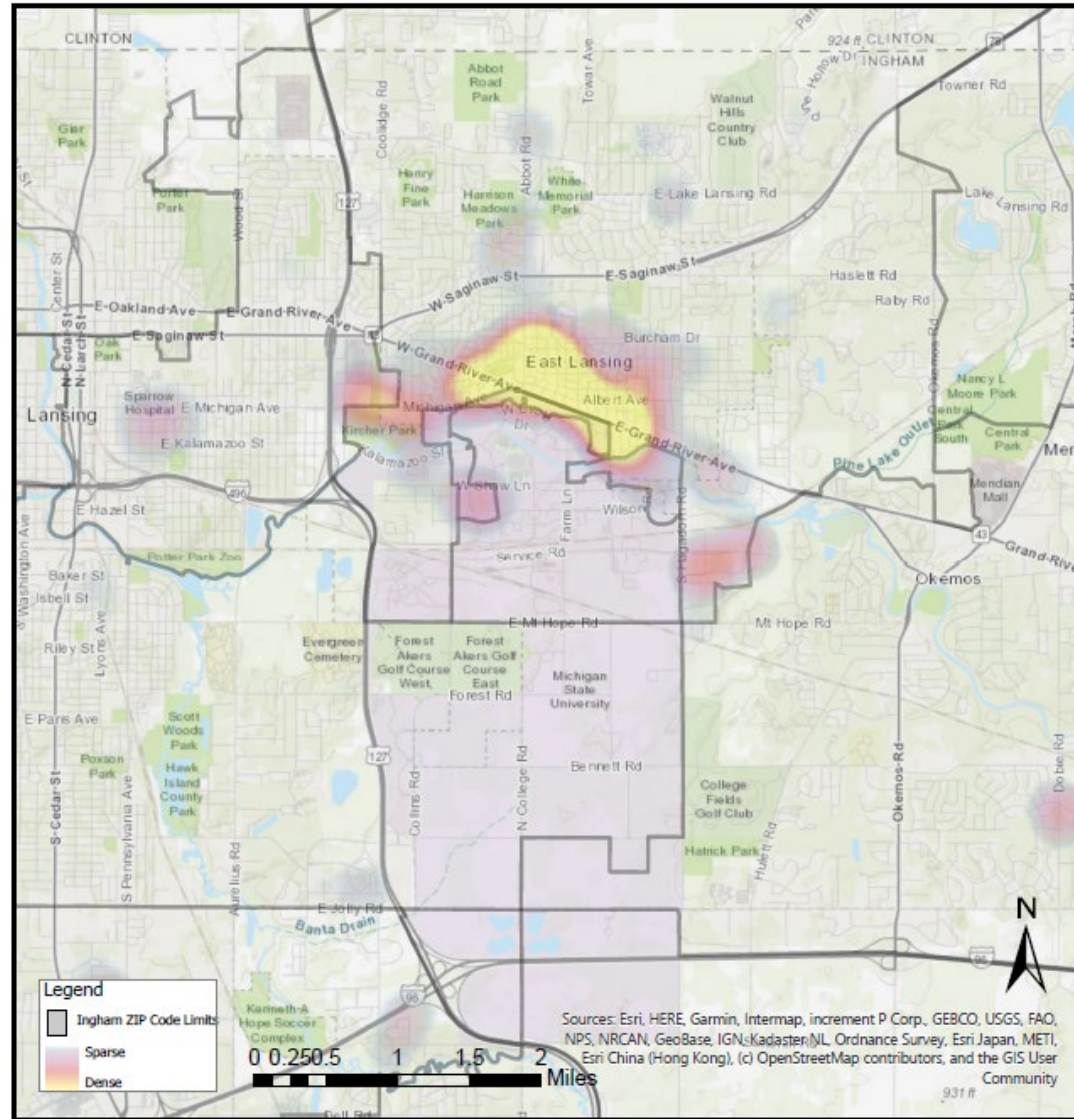
Legend

RATE	Color
0	Light Green
1 - 547	Medium Green
548 - 860	Light Blue
861 - 1071	Dark Blue
1072 - 2492	Very Dark Blue



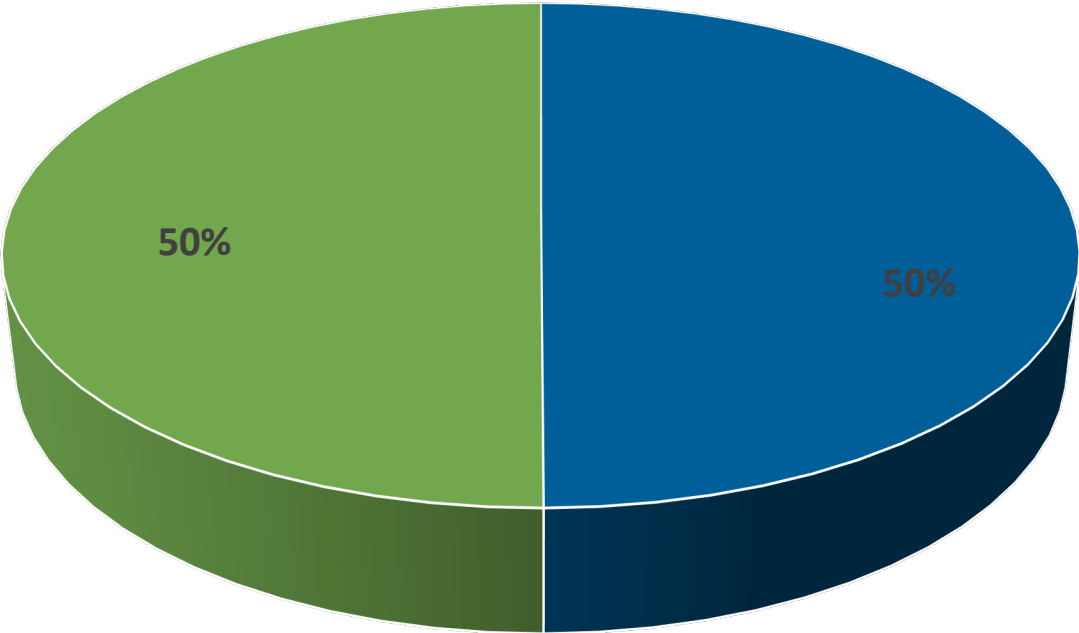
Ingham County COVID-19 Heat Map

Data current as of 11 AM, 9/22/2020



Demographics

Ingham County: Percent COVID -19 Cases by Sex

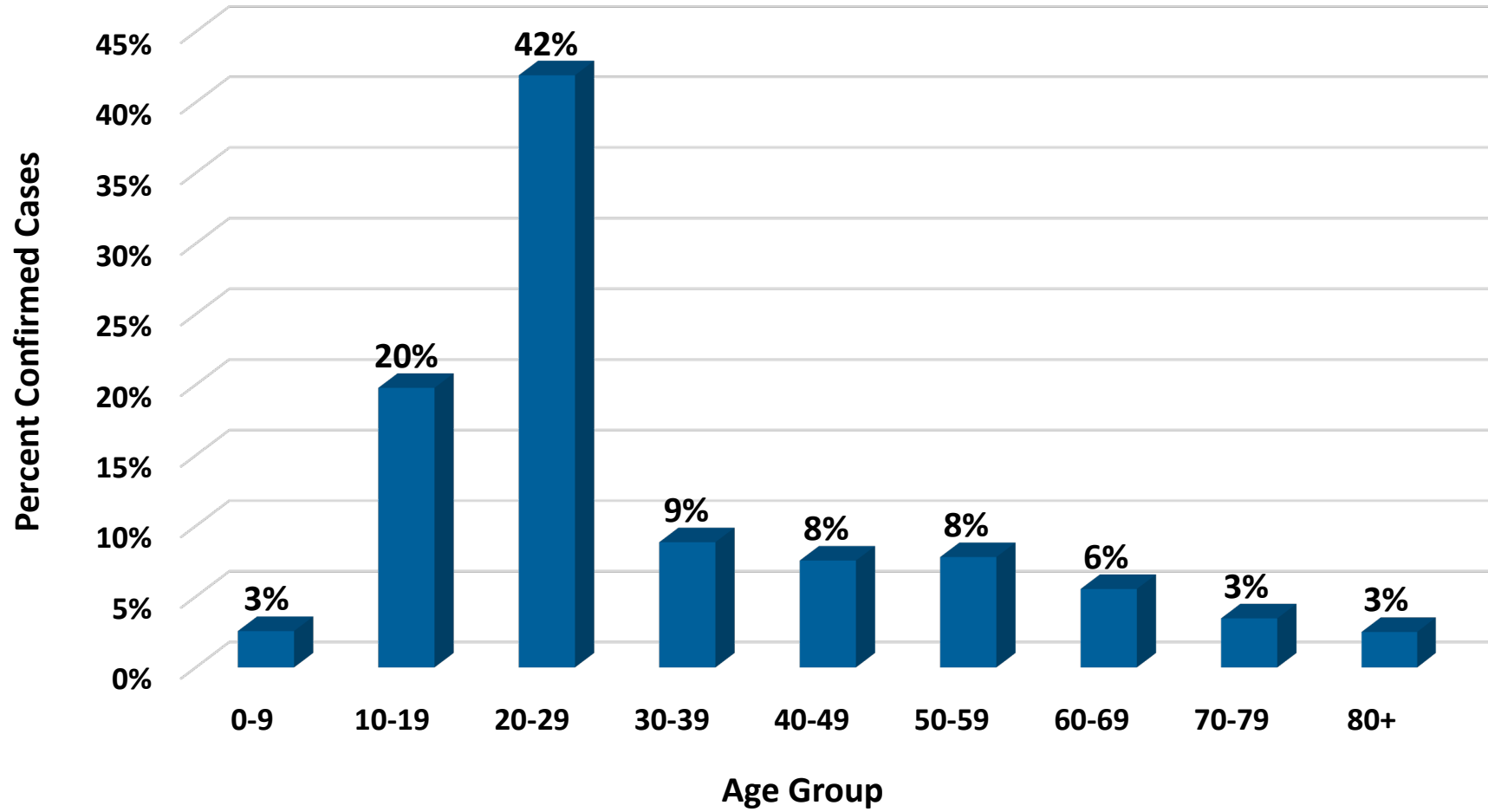


■ Female ■ Male

Data are current as of 11 AM, 09/22/2020.



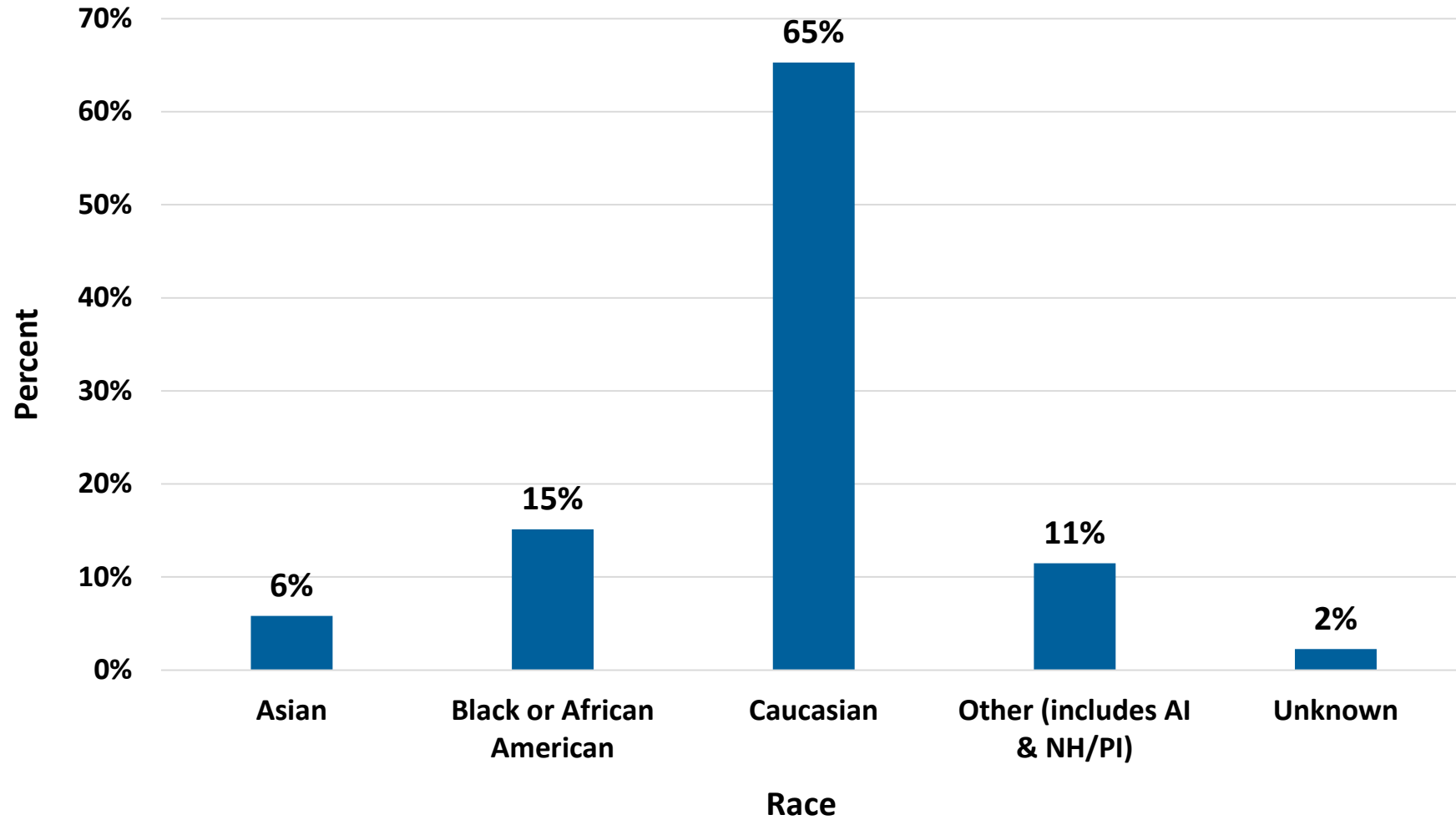
Ingham County: Percent COVID-19 Cases by Age Group



Data are current as of 11 AM, 09/22/2020.



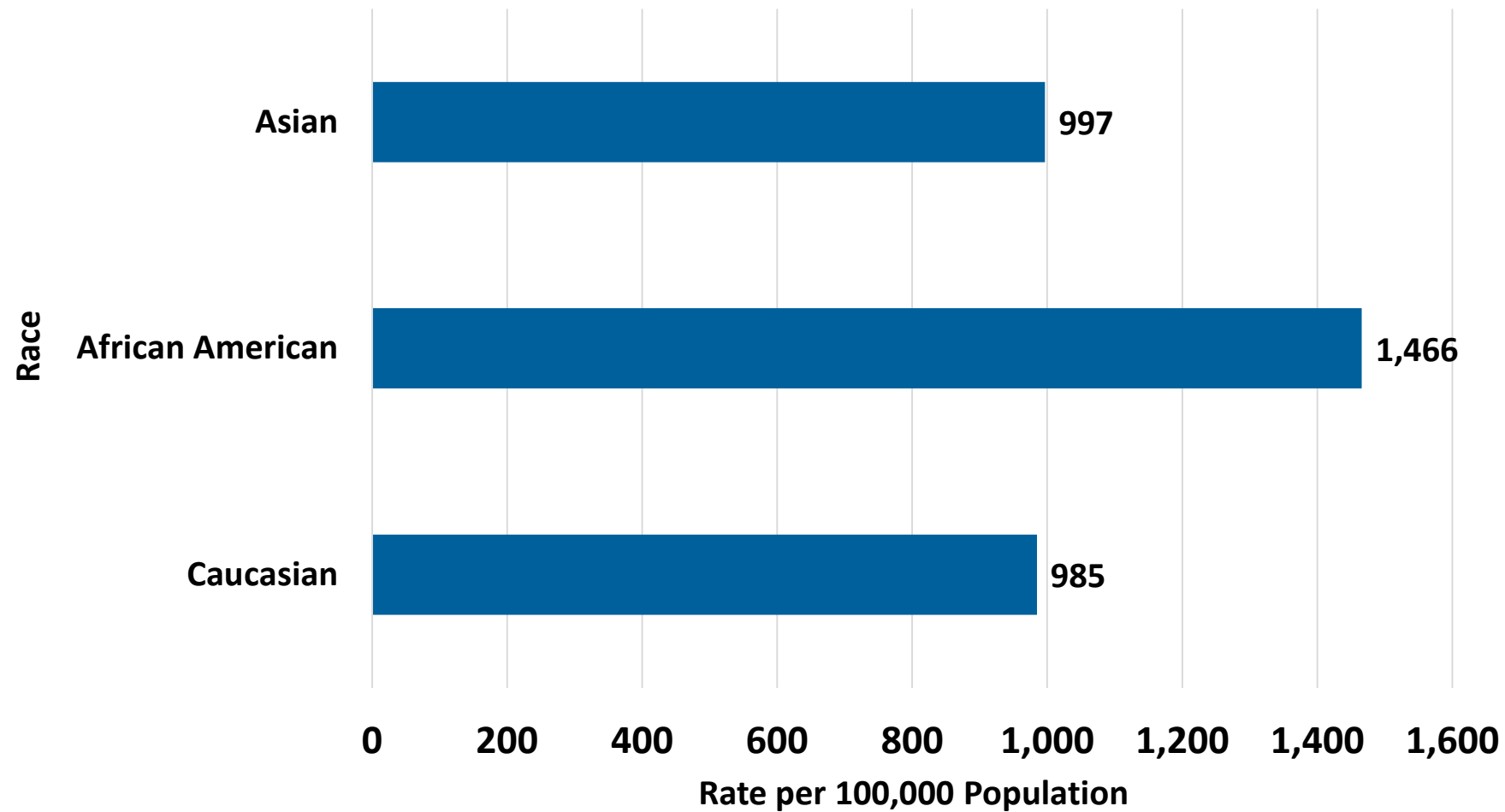
Ingham County: Percent Confirmed COVID 19 Cases by Race



Data are current as of 11 AM, 09/22/2020.



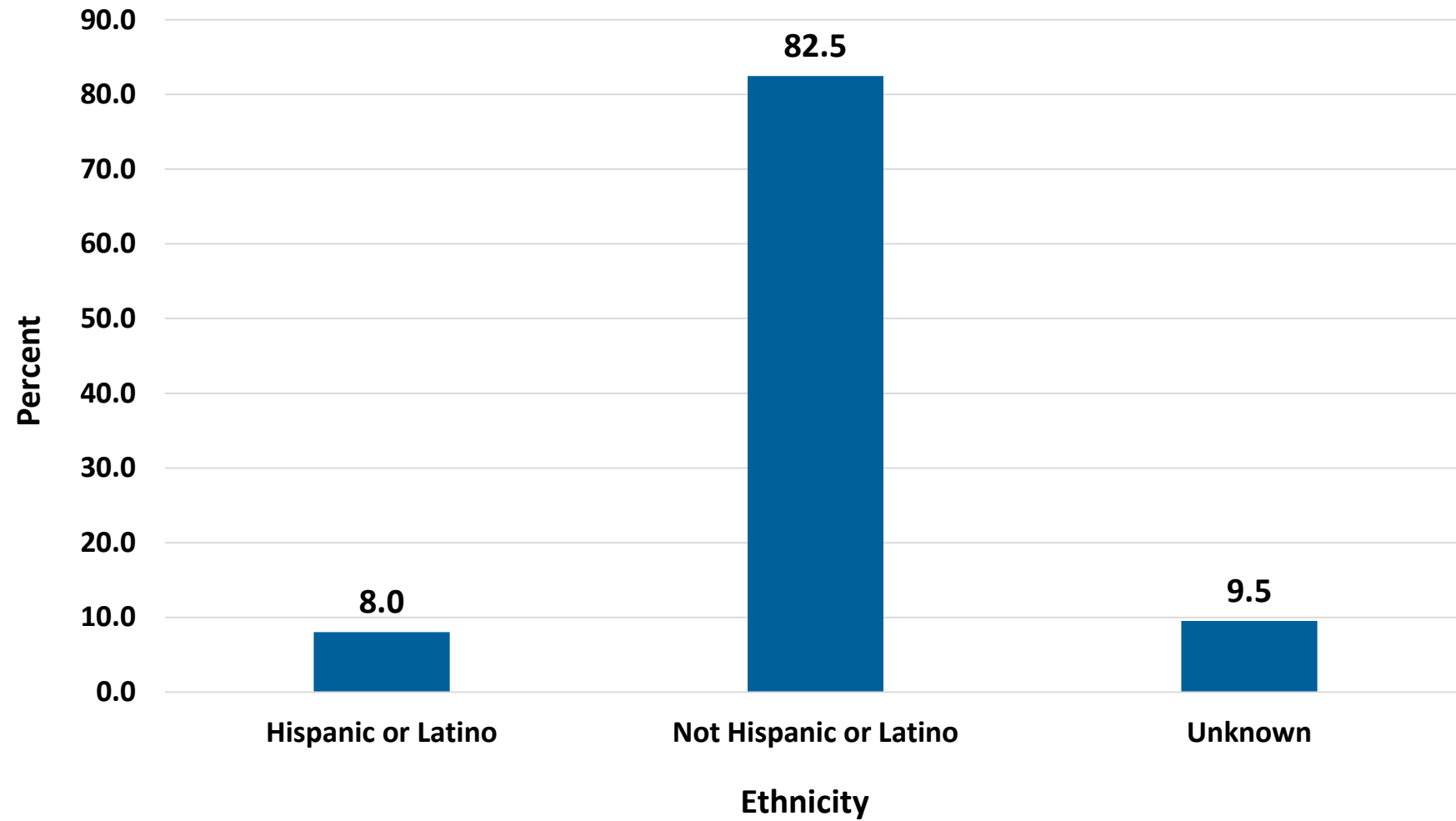
Ingham County COVID-19: Race-Specific Prevalence Rate



Data are current as of 11 AM, 09/22/2020.



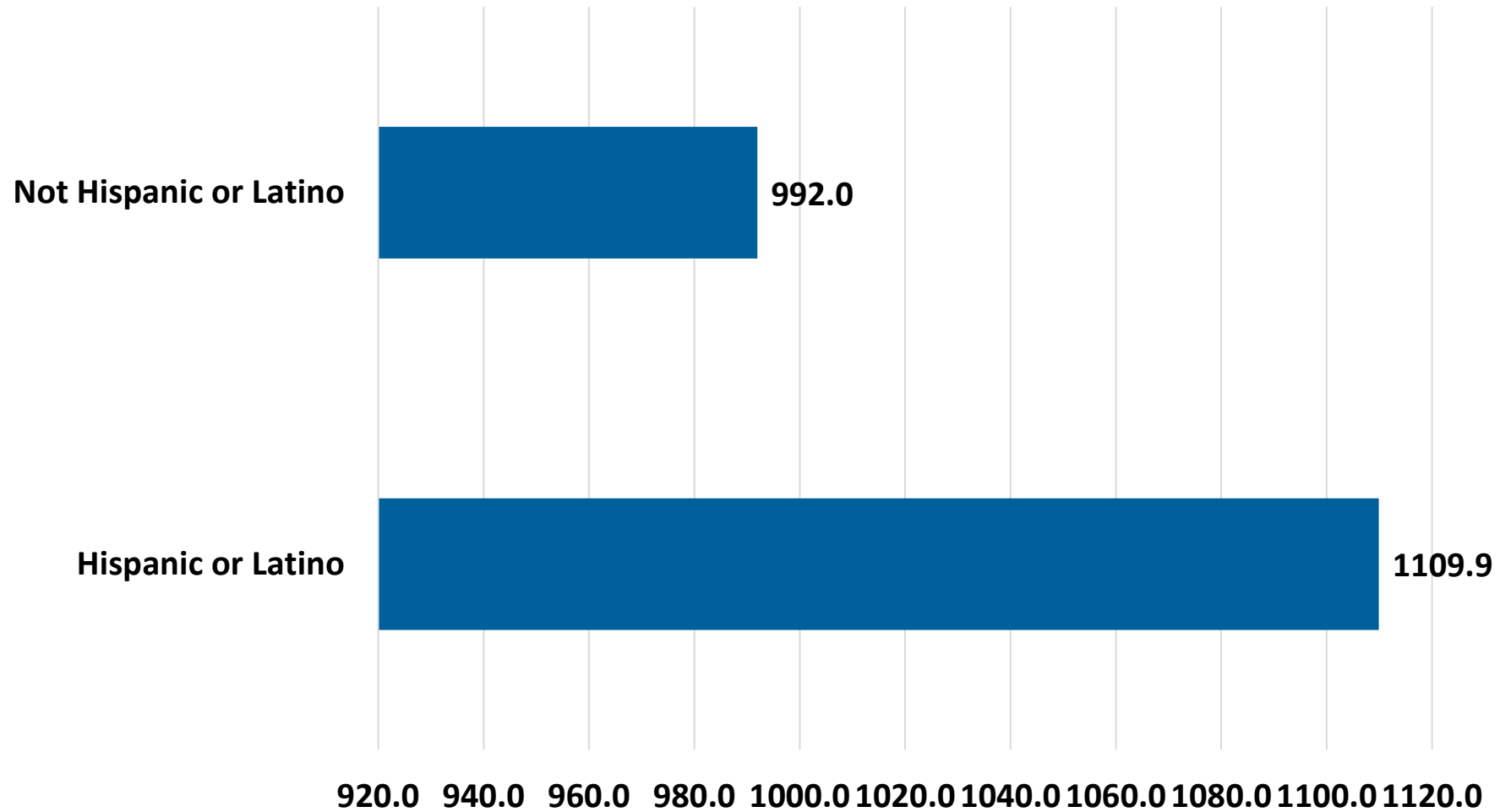
Ingham County: Confirmed COVID-19 Cases by Ethnicity (%)



Data are current as of 11 AM, 09/22/2020.



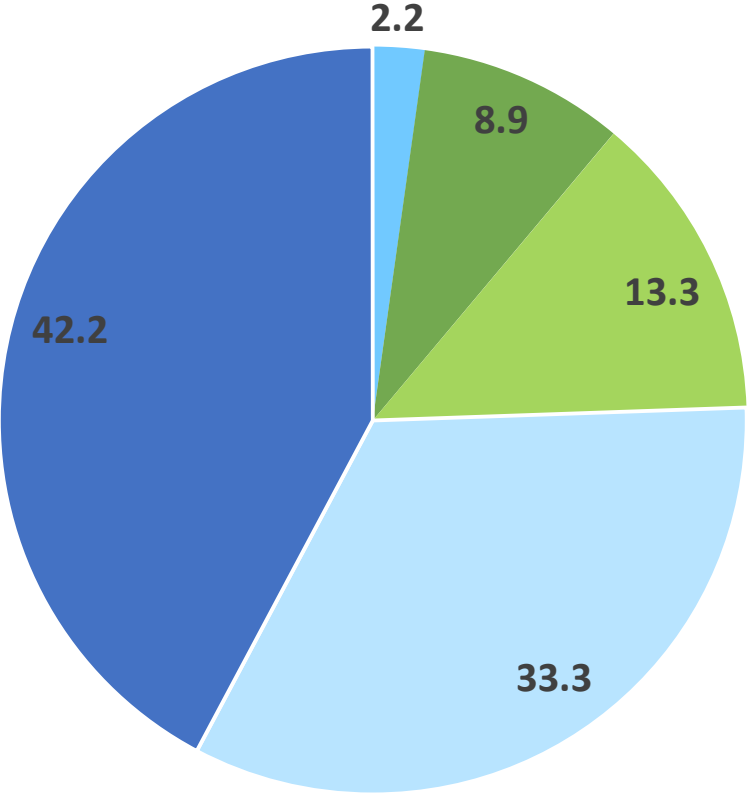
Ingham County: Ethnicity Rate per 100,000 Population



Data are current as of 11 AM, 09/22/2020.



Ingham County: Percent COVID-19 Deaths by Age

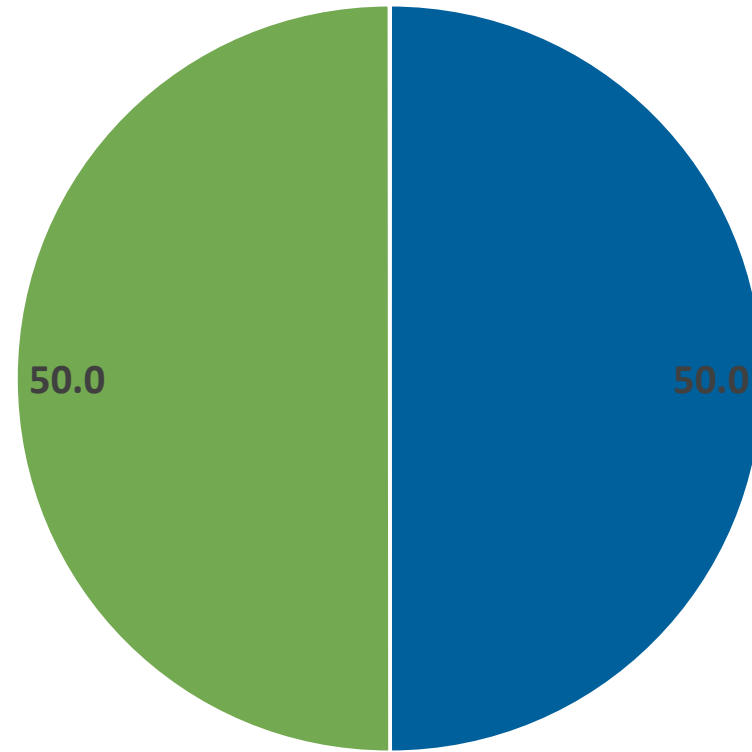


■ 40 - 49 yrs ■ 50 - 59 yrs ■ 60 - 69 yrs ■ 70 - 79 yrs ■ Over 80 yrs

Data are current as of 11 AM, 09/22/2020.



Ingham County: Percent COVID-19 Deaths by Sex

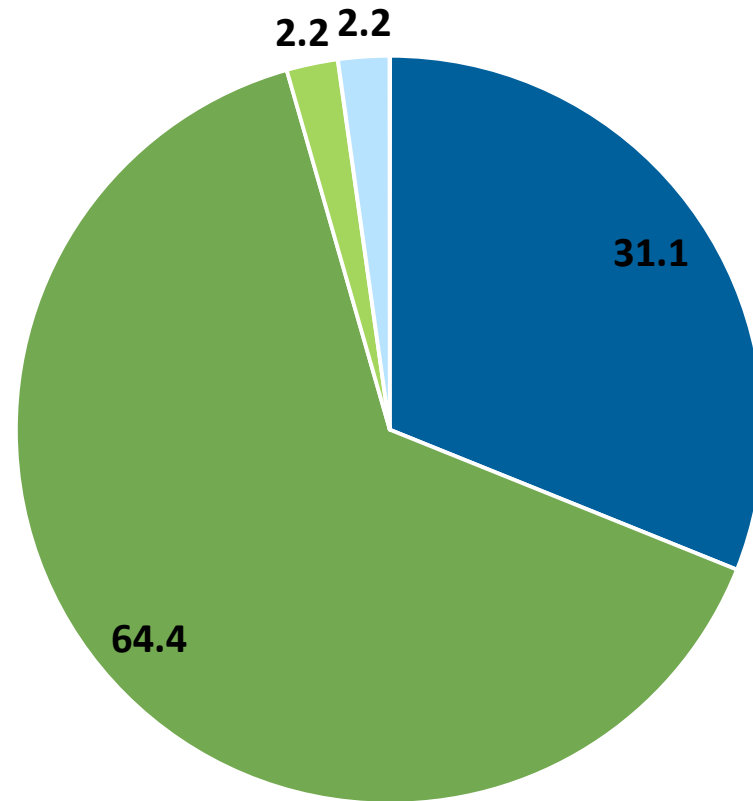


■ Female ■ Male

Data are current as of 11 AM, 09/22/2020.



Ingham County: Percent COVID-19 Deaths by Race

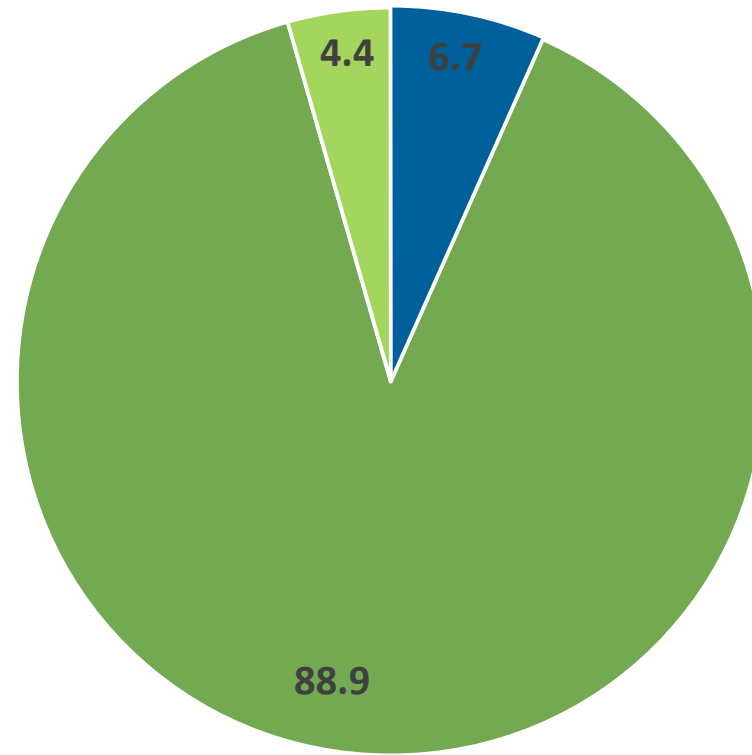


■ African American ■ Caucasian ■ Other ■ Unknown

Data are current as of 11 AM, 09/22/2020.



Ingham County: Percent COVID-19 Deaths by Ethnicity

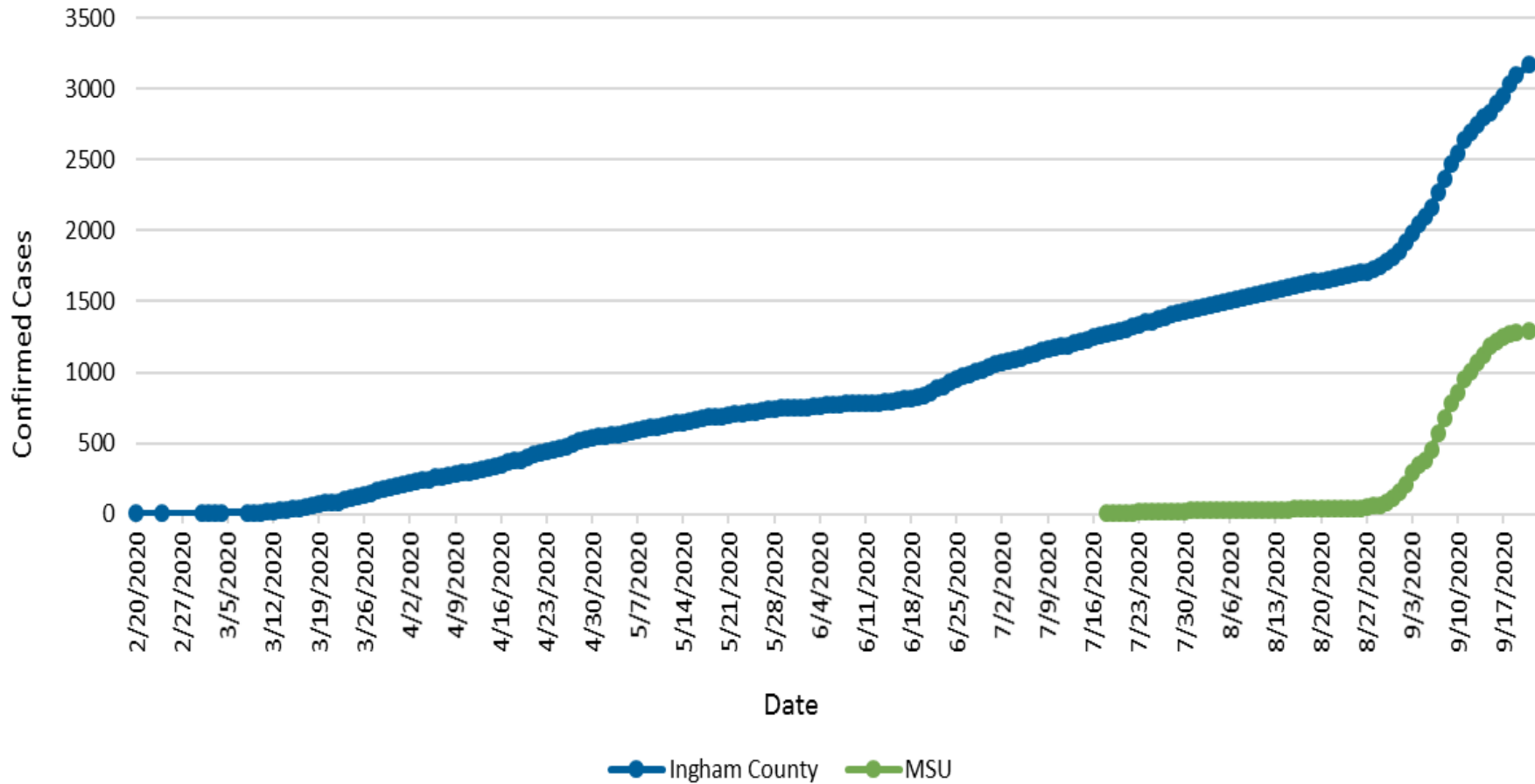


■ Hispanic or Latino ■ Not Hispanic or Latino ■ Unknown

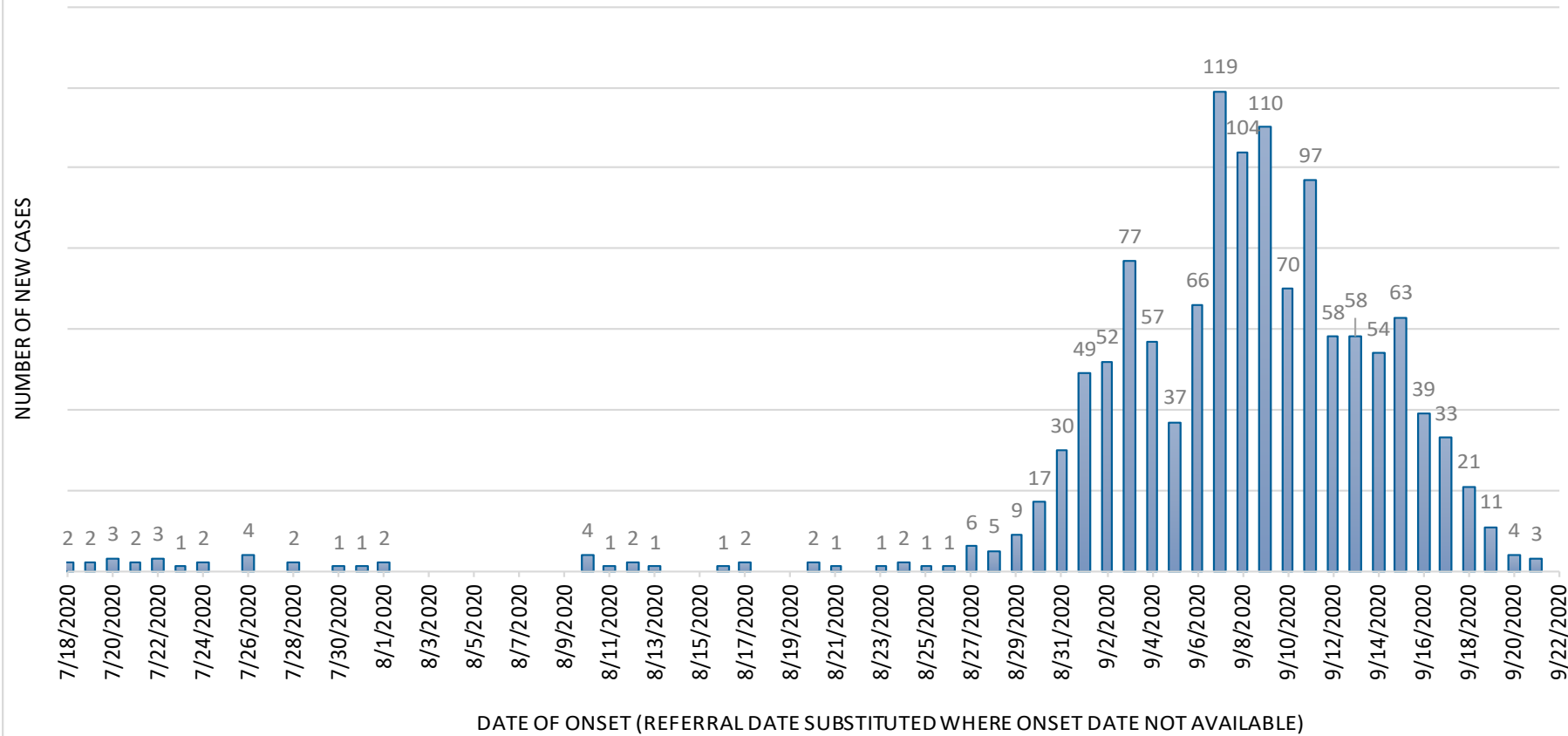
Data are current as of 11 AM, 09/22/2020.



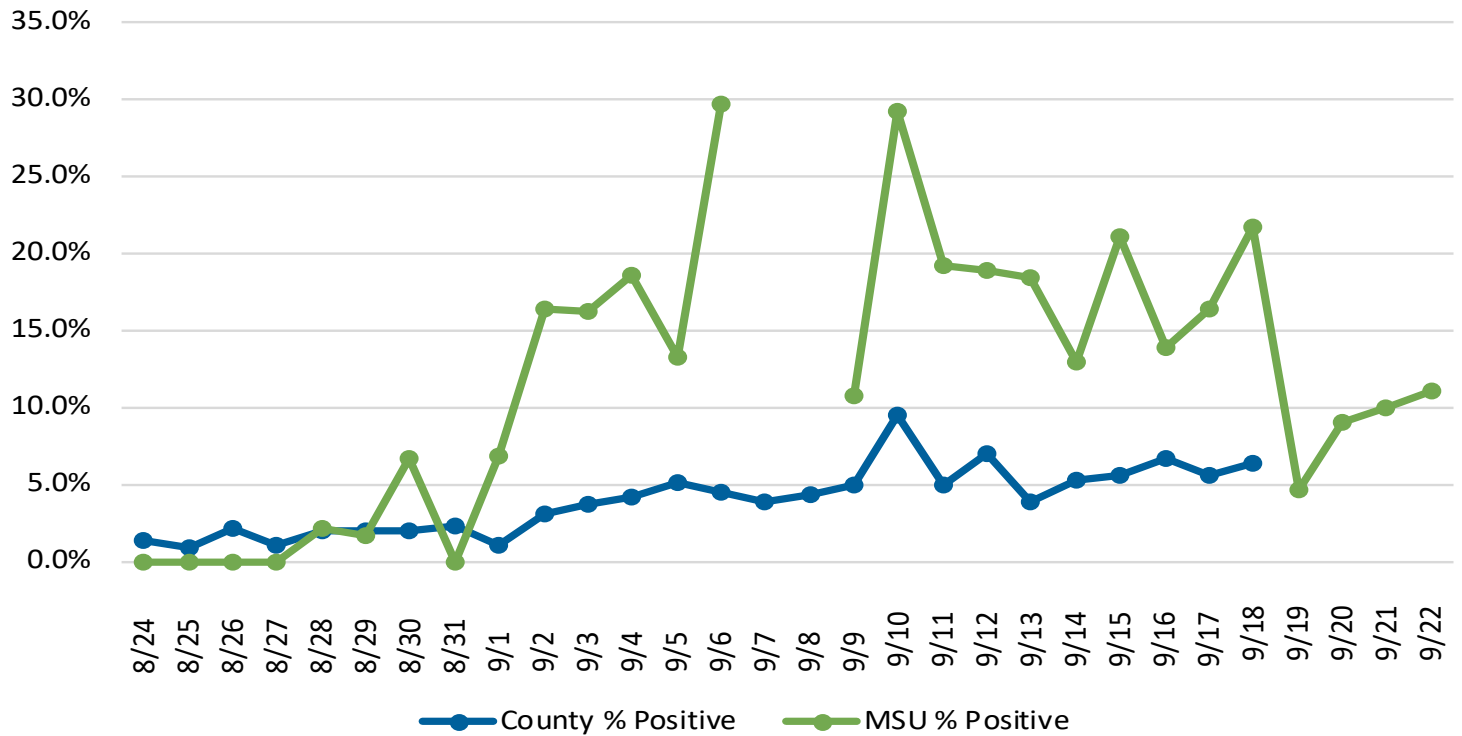
Cumulative Case Counts: Ingham County vs. MSU-Related Cases



MSU-Related New Cases by Date of Onset



Percent Positive Per Day: Ingham County vs. MSU-Related Cases



NB: On 9/7 we have just 1 positive i.e. 100% which skews the data and has been removed as an outlier. 9/8 as well. County % Positive Numbers are from MIHAN.



MSU-Related Cases: 7-Day Rolling Averages, Incidence and Daily Percent Positive

